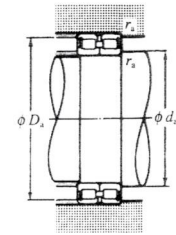
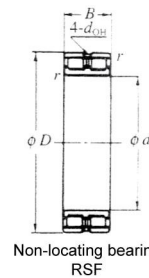
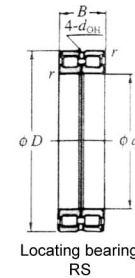


Cylindrical Roller Bearings

Those bearings have double row, full complementary cylindrical rollers, and flanged inner ring and outer ring. They can accommodate heavy radial loads, couple loads and certain axial loads.

Besides the application of crane pulley, pulley bearings can be used for many other applications, such as crane rolling cylinders, wheels and other low speed but heavy load applications.

RS-48 RS-48
RSF-48 RSF-48
Bore diameter d: 50~280mm



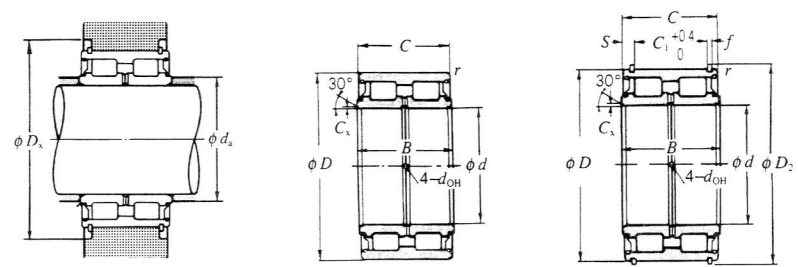
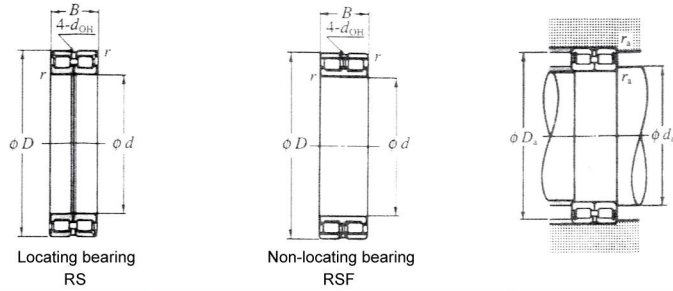
bearing series	description
RS48, RSF48	Non-separable roller bearing, for general purpose
RS49, RSF49	when the shaft need two more bearings , RS design is used locating end and RSF for non-locating side
RS50	For crane pulleys

Inner bore diameter and width tolerances				Outer bore diameter of outer ring			
Nominal bore diameter d(mm)	d tolerances		B tolerances		Nominal bore diameter D(mm)	D tolerances	
	upper limit	lower limit	upper limit	lower limit		upper limit	lower limit
30-50	0	-12	0	-120	30-50	-	-
50-90	0	-15	0	-150	50-80	0	13
80-120	0	-20	0	-200	80-120	0	-15
120-150	0	-25	0	-250	120-150	0	-18
150-180	0	-25	0	-250	150-180	0	-25
180-250	0	-30	0	-300	180-250	0	-30
250-315	0	-35	0	-350	250-315	0	-35
315-400	0	-40	0	-400	315-400	0	-40
400-500	0	-45	0	-450	400-500	0	-45
					500-630	0	-50
					630-800	0	-75

5000 series radial clearance			4800/4900 series radial clearance		
Nominal bore diameter D(mm)	standard radial clearance		Nominal bore diameter D(mm)	standard radial clearance	
	max	min		max	min
--70	35	70	--70	40	75
70-80	40	75	70-80	40	75
80-100	45	90	80-100	45	90
100-125	55	105	100-125	55	105
125-150	65	115	125-150	65	115
150-180	65	120	150-180	65	120
180-240	65	130	180-240	65	130
240-280	70	135	240-280	70	135
280-310	70	140	280-310	70	140
310-340	75	150	310-340	75	150
340-360	90	165	340-360	90	165
360-420	100	180	360-420	100	180
420-460	110	195	420-500	110	195
460-520	125	215			
520-600	140	235			
600-650	155	275			
650-700	180	300			

Principal dimensions					Designation		Basic load rating		Ref designation			Ref. Weight (kg)
d	D	B	r	e ⁽¹⁾	fixed	travel about	Dynamic Cr(N)	Static Cor(N)	d _a (min)	D _a (min)	f _a (min)	
50	75	22	0.6	1	RS-4910	RSF-4910	49000	83000	56	66	0.6	0.3
60	85	25	1	1	RS-4912	RSF-4912	68000	118000	67	78	1	0.46
70	100	30	1	1	RS-4914	RSF-4914	105000	193000	77	93	1	0.79
80	110	30	1	1	RS-4916	RSF-4916	1130000	221000	87	103	1	0.88
90	125	35	1.1	1	RS-4918	RSF-4918	1500000	300000	98	117	1	1.37
100	125	25	1	1.5	RS-4820	RSF-4820	89000	193000	105	120	1	0.7
	140	40	1.1	2	RS-4920	RSF-4920	198000	410000	106.5	133.5	1	1.9
105	130	25	1	1.5	RS-4821	RSF-4821	91000	199000	110	125	1	0.7
	145	40	1.1	2	RS-1921	RSF-1921	203000	430000	111.5	138.5	1	2.0
110	140	30	1	2	RS-4822	RSF-4822	117000	265000	115	135	1	1.0
	150	40	1.1	2	RS-4922	RSF-4922	206000	440000	116.5	143.5	1	2.1
120	150	30	1	2	RS-4824	RSF-4824	122000	289000	125	145	1	1.2
	165	45	1.1	3	RS-4924	RSF-4924	231000	490000	126.5	158.5	1	2.9
130	165	35	1.1	2	RS-4826	RSF-4826	165000	395000	136.5	158.5	1	1.9
	180	50	1.5	3.5	RS-4926	RSF-4926	267000	56500	138	172	1.5	3.9
140	175	35	1.1	2	RS-4828	RSF-4828	170000	425000	146.5	168.5	1	2.0
	190	50	1.5	3.5	RS-4928	RSF-4928	277000	605000	148	182	1.5	4.2
150	190	40	1.1	2	RS-4830	RSF-4830	239000	585000	156.5	183.5	4	2.8
	210	60	2	3.5	RS-4930	RSF-4930	400000	885000	159	201	2	6.6
160	200	40	1.1	2	RS-4832	RSF-4832	248000	630000	166.5	193.5	1	3.0
	220	60	2	.35	RS-4932	RSF-4932	415000	950000	169	211	2	7.0
170	215	45	1.1	3	RS-4834	RSF-4834	270000	685000	176.5	208.5	1	4.1
	230	60	2	3.5	RS-4934	RSF-4934	425000	995000	179	221	2	7.3
180	225	45	1.1	3	RS-4836	RSF-4836	278000	700000	186.5	218.5	1	4.3
	250	69	2	4.5	RS-4936	RSF-4936	505000	1150000	189	241	2	10.7
190	240	50	1.5	3.5	RS-4838	RSF-4838	320000	800000	198	232	1.5	5.6
	260	69	2	4.5	RS-4938	RSF-4938	520000	1200000	199	251	2	11.1
200	250	50	1.5	3.5	RS-4840	RSF-4840	330000	840000	208	242	1.5	5.9
	280	80	2.1	5	RS-4940	RSF-4940	680000	1530000	211	269	2	15.7
220	270	50	1.5	3.5	RS-4844	RSF-4844	645000	925000	228	262	1.5	6.4
	300	80	2.1	5	RS-4944	RSF-4944	705000	1650000	231	289	2	17
240	300	60	2	3.5	RS-4848	RSF-4848	505000	1370000	249	291	2	10.3
	320	80	2.1	5	RS-4948	RSF-4948	740000	1810000	251	309	2	18.4
260	320	60	2	3.5	RS-4852	RSF-4852	525000	1480000	269	311	2	11
	360	100	2.1	6	RS-4952	RSF-4952	1070000	2580000	271	349	2	32
280	350	69	2	4.5	RS-4856	RSF-4856	625000	1730000	289	341	2	16
	380	100	2.1	6	RS-4956	RSF-4956	1110000	2770000	291	369	2	34

RS-48 RS-48
RSF-48 RSF-49
Bore diameter d: 300~560mm



Principal dimensions					Designation		Basic load rating		Ref designation			Ref. Weight (kg)
d	D	B	r (min)	e ⁽¹⁾	fixed	travel about	Dynamic Cr(N)	Static Cor(N)	d _a (min)	D _a (min)	r _a (min)	
300	380	80	2.1	5	RS-4860	RSF-4860	820000	2200000	311	369	2	23
	420	118	3	7	RS-4960	RSF-4960	1490000	3500000	313	407	2.5	52
320	400	80	2.1	5	RS-4864	RSF-4864	850000	2360000	331	389	2	24.3
	440	118	3	7	RS-4964	RSF-4964	1530000	3650000	333	427	2.5	55
340	420	80	2.1	5	RS-4868	RSF-4868	8750000	2480000	351	409	5	25.6
	460	118	3	7	RS-4968	RSF-4968	1590000	3950000	353	447	2.5	58
360	440	80	2.1	5	RS-4872	RSF-4872	900000	3640000	371	429	2	27
	480	118	3	7	RS-4972	RSF-4972	1630000	4150000	373	467	2.5	61
380	480	100	2.1	6	RS-4876	RSF-4876	1280000	3650000	391	469	5	45.5
	520	140	4	8	RS-4976	RSF-4976	2090000	5300000	396	504	3	90.5
400	500	100	2.1	6	RS-4880	RSF-4880	1320000	3850000	411	489	2	47.5
	540	140	4	8	RS-4980	RSF-4980	2140000	5550000	416	524	3	94.5
420	520	100	2.1	6	RS-4884	RSF-4884	1350000	4050000	431	509	2	49.5
	560	140	4	8	RS-4984	RSF-4984	2190000	5800000	436	544	3	98.5
440	540	100	2.1	6	RS-4888	RSF-4888	1380000	4200000	451	529	2	51.5
	600	160	4	8	RS-4988	RSF-4988	2890000	7500000	456	584	3	136
460	580	118	3	7	RS-4892	RSF-4892	1770000	5250000	473	567	2.5	77.5
	620	160	4	8	RS-4992	RSF-4992	2930000	7650000	476	604	3	142
480	600	118	3	7	RS-4896	RSF-4896	1800000	5450000	493	587	2.5	80.5
	650	170	5	9	RS-4996	RSF-4996	3250000	8650000	500	630	4	167
500	620	118	3	7	RS-48/500	RSF-48/500	1840000	5700000	513	607	2.5	83.5
	670	170	5	9	RS-49/500	RSF-49/500	3350000	9100000	520	650	4	173
530	710	180	5	11	RS-49/530	RSF-49/530	3500000	9350000	550	690	4	206
560	750	190	5	11	RS-49/560	RSF-49/560	3850000	10300000	580	730	4	231

Principal dimensions										Designation		Dynamic Cr(N)	Static Cor(N)	Ref designation		Ref. Weight (kg)
d	D	B	G	r (min)	c	D ₂	C ₁	S	f	non stop ring	stop ring			d _a (min)	D _x (min)	
40	68	38	37	0.6	1.5	71.8	28	4.5	2	RS-5009	RS-5009NR	79000	125000	46	80	0.57
45	75	40	39	0.6	1.5	78.8	30	4.5	2	RS-5009	RS-5009NR	95000	144000	51	87	0.71
50	80	40	39	0.6	1.5	83.8	60	4.5	2	RS-5010	RS-5010NR	99500	158000	56	92	0.77
55	90	46	45	0.6	2	94.8	34	5.5	2.5	RS-5011	RS-5011NR	117000	193000	63	104	1.18
60	95	46	45	0.6	2	99.8	34	5.5	2.5	RS-5012	RS-5012NR	123000	208000	68	109	1.26
65	100	46	45	0.6	2	104.8	34	5.5	2.5	RS-5013	RS-5013NR	128000	224000	73	114	1.34
70	110	54	53	0.6	2	117.4	42.18	5.41	2.41	RS-5014	RS-5014NR	170000	285000	78	127	1.91
75	115	54	53	0.6	2	127.1	42	5.5	2.5	RS-5015	RS-5015NR	177000	305000	83	136	2.01
80	125	60	59	0.6	2	137.1	48	5.5	2.5	RS-5016	RS-5016NR	250000	430000	88	146	2.71
85	130	60	59	0.6	2	142.1	48	5.5	2.5	RS-5017	RS-5017NR	255000	445000	93	155	2.85
90	140	67	66	0.6	2.5	151.8	54	6	2.5	RS-5018	RS-5018NR	305000	540000	100	165	3.81
95	145	67	66	0.6	2.5	156.8	54	6	2.5	RS-5019	RS-5019NR	310000	560000	105	175	3.97
100	150	67	66	0.6	1	155.4	54	6	2.5	RS-5020	RS-5020NR	215000	595000	106	163.5	4.05
110	170	80	79	1	1.1	175.4	65	7	2.5	RS-5022	RS-5022NR	390000	710000	115.5	183.5	6.1
120	180	80	79	1	1.1	188	65	7	3	RS-5024	RS-5024NR	405000	765000	126.5	197	7.0
130	200	95	94	1	1.1	207	77	8.5	3	RS-5026	RS-5026NR	545000	1020000	136.5	217	10.6
140	210	95	94	1	1.1	217	77	8.5	3	RS-5028	RS-5028NR	560000	1060000	146.5	227	11.3
150	225	100	99	1	1.3	232	81	9	3	RS-5030	RS-5030NR	635000	1240000	157	242	13.7
160	240	109	108	1.1	1.3	247	89	9.5	3	RS-5032	RS-5032NR	710000	1400000	167	257	16.8
170	260	122	121	1.1	1.3	270	99	11	4	RS-5034	RS-5034NR	880000	1710000	177	285	22.2
180	280	136	135	1.1	1.3	294	110	12.5	5	RS-5036	RS-5036NR	1000000	1950000	187	318	30
190	290	136	135	1.1	1.3	304	110	12.5	5	RS-5038	RS-5038NR	1140000	2270000	197	328	32
200	310	150	149	1.1	1.3	324	120	14.5	5	RS-5040	RS-5040NR	1330000	2700000	207	352	41
220	340	160	159	1.1	1.5	356	130	14.5	6	RS-5044	RS-5044NR	1540000	3200000	228.5	382	53
240	360	160	159	1.1	1.5	376	130	14.5	6	RS-5048	RS-5048NR	1600000	3400000	248.5	402	57
260	400	190	189	1.5	2	416	154	17.5	7	RS-5052	RS-5052NR	2170000	4600000	270	444	86
280	420	190	189	1.5	2	436	154	17.5	7	RS-5056	RS-5056NR	2210000	4800000	290	472	92
300	460	218	216	1.5	2	476	178	19	7	RS-5060	RS-5060NR	2720000	6000000	310	512	130
320	480	218	216	1.5	2	-	-	-	-	RS-5064	-	2770000	6200000	330	-	135
340	520	243	241	2	2.1	-	-	-	-	RS-5068	-	2450000	7700000	352	-	185
360	540	243	241	2	2.1	-	-	-	-	RS-5072	-	2500000	8000000	372	-	192
380	560	243	241	2	2.1	-	-	-	-	RS-5076	-	3650000	8550000	392	-	196
400	600	272	270	2	2.1	-	-	-	-	RS-5080	-	4350000	10100000	412	-	280
420	620	272	270	6	2.5	-	-	-	-	RS-5084	-	4350000	10500000	442	-	275
440	650	280	278	8	3	-	-	-	-	RS-5088	-	4550000	10900000	464	-	310
460	680	300	298	8	3	-	-	-	-	RS-5092	-	5050000	12100000	484	-	365
480	700	300	298	8	3	-	-	-	-	RS-5096	-	5150000	12500000	504	-	380